



DOSING AND ADVERSE REACTION MANAGEMENT GUIDE

A guide for managing patients who are prescribed
LONSURF + bevacizumab or single-agent LONSURF

INDICATIONS

LONSURF is indicated as a single agent or in combination with bevacizumab for the treatment of adult patients with metastatic colorectal cancer previously treated with fluoropyrimidine-, oxaliplatin- and irinotecan-based chemotherapy, an anti-VEGF biological therapy, and if RAS wild-type, an anti-EGFR therapy.¹

LONSURF is indicated for the treatment of adult patients with metastatic gastric or gastroesophageal junction adenocarcinoma previously treated with at least two prior lines of chemotherapy that included a fluoropyrimidine, a platinum, either a taxane or irinotecan, and if appropriate, HER2/neu-targeted therapy.¹

IMPORTANT SAFETY INFORMATION

WARNINGS AND PRECAUTIONS

Severe Myelosuppression: In the 1114 patients who received LONSURF as a single agent, LONSURF caused severe or life-threatening myelosuppression (Grade 3-4) consisting of neutropenia (38%), anemia (17%), thrombocytopenia (4%) and febrile neutropenia (3%). Three patients (0.3%) died due to neutropenic infection/sepsis; four other patients (0.5%) died due to septic shock. A total of 14% of patients received granulocyte-colony stimulating factors. In the 246 patients who received LONSURF in combination with bevacizumab, LONSURF caused severe or life-threatening myelosuppression (Grade 3-4) consisting of neutropenia (52%), anemia (5%), thrombocytopenia (4%) and febrile neutropenia (0.4%).

Please see additional Important Safety Information throughout and full [Prescribing Information](#).

Achieving therapy goals depends on proper dosing

- Indicated dosage: 35 mg/m²* twice daily with food (no food restrictions)¹
 - Round dose up to the nearest 5-mg increment
 - Do not exceed 80 mg per dose (160 mg per day)
 - In patients with severe renal impairment (CLcr of 15 to 29 mL/min), the recommended dosage is 20 mg/m²*
- Active treatment days include days 1 through 5 and days 8 through 12 of each 28-day treatment cycle¹
- Obtain complete blood cell counts prior to and on day 15 of each cycle¹

Two tablet strengths¹



15 mg trifluridine/6.14 mg tipiracil tablet¹



20 mg trifluridine/8.19 mg tipiracil tablet¹

Tablets shown are not actual size. Actual tablet size is 7 mm for 15-mg dose and 8 mm for 20-mg dose.

Instruct patients to swallow LONSURF® (trifluridine and tipiracil) tablets whole. Patients should not retake any doses that are missed or vomited, and should continue with the next scheduled dose.¹

When adding bevacizumab to LONSURF tablets in mCRC, the dose of bevacizumab is 5 mg/kg of body weight given once every 2 weeks (day 1 and day 15). Refer to the Prescribing Information for bevacizumab for additional dosing information.^{1,2}

CLcr=creatinine clearance; mCRC=metastatic colorectal cancer.

*Based on the trifluridine component.¹

IMPORTANT SAFETY INFORMATION

WARNINGS AND PRECAUTIONS (continued)

Severe Myelosuppression (continued): One patient (0.4%) died due to abdominal sepsis and two other patients (0.8%) died due to septic shock. A total of 29% of patients received granulocyte-colony stimulating factors. Obtain complete blood counts prior to and on Day 15 of each cycle of LONSURF and more frequently as clinically indicated. Withhold LONSURF for severe myelosuppression and resume at the next lower dosage.

2 Please see additional Important Safety Information throughout and full [Prescribing Information](#).

Treatment schedule for LONSURF +/- bevacizumab^{1,2}



	LONSURF		Bevacizumab
Week 1	Twice daily for 5 days with food	2 days rest	IV dose (Day 1)
Week 2	Twice daily for 5 days with food	2 days rest	–
Week 3	Rest		IV dose (Day 15)
Week 4	Rest		–

IV=intravenous.

Remind patients and their caregivers that LONSURF is a cytotoxic drug. Follow applicable special handling and disposal procedures. Store at 20°C to 25°C (68°F to 77°F); excursions are permitted from 15°C to 30°C (59°F to 86°F). If stored outside of original bottle, discard after 30 days.¹



Scan the QR code for LONSURF Dosage Calculator and Personalized Treatment Calendar or visit LONSURFhcp.com/dosing/dosage-calculator

Packaging Information¹

Formulation	Packaging	11-digit NDC ^a
LONSURF 15-mg trifluridine/6.14-mg tipiracil tablets	20-count bottle	64842-1025-01
	40-count bottle	64842-1025-02
	60-count bottle	64842-1025-03
LONSURF 20-mg trifluridine/8.19-mg tipiracil tablets	20-count bottle	64842-1020-01
	40-count bottle	64842-1020-02
	60-count bottle	64842-1020-03

NDC=National Drug Code.

^aThe red zero converts the 10-digit NDC to the 11-digit NDC. Payer requirements regarding the use of NDCs may vary. Electronic data exchange generally requires use of the 11-digit NDC.

Please see additional Important Safety Information throughout and full [Prescribing Information](#).

SUNLIGHT safety profile

Adverse reaction (AR) profile of LONSURF® (trifluridine and tipiracil) tablets + bevacizumab combination was consistent with the independent AR profiles of each product^{1,3}

Select laboratory abnormalities (≥10%) in patients receiving LONSURF + bevacizumab and single-agent LONSURF¹

	LONSURF + bevacizumab (n=246)		LONSURF (n=246)	
Hematologic abnormalities	All grades (%)	Grade 3-4 (%)	All grades (%)	Grade 3-4 (%)
Neutropenia	80	52	68	39
Anemia	68	5	73	11
Thrombocytopenia	54	4.1	29	0.8

- **29%** of patients who received LONSURF + bevacizumab received granulocyte-colony stimulating factors (G-CSF) vs 14% with single-agent LONSURF¹
- Febrile neutropenia occurred in 1 patient (**0.4%**) who received LONSURF + bevacizumab and in 6 patients who received single-agent LONSURF²

- **Dose delays** due to adverse events occurred in **70%** of patients with LONSURF + bevacizumab²
- **Dosage interruptions** due to an AR occurred in **11%** of patients who received LONSURF + bevacizumab¹
- **Dose reduction** due to an AR or laboratory abnormality occurred in **7%** of patients with LONSURF + bevacizumab¹
- **Discontinuation** due to an AR occurred in **13%** of patients in both treatment arms²

IMPORTANT SAFETY INFORMATION

WARNINGS AND PRECAUTIONS (continued)

Embryo-Fetal Toxicity: LONSURF can cause fetal harm when administered to a pregnant woman. Advise pregnant women of the potential risk to the fetus. Advise females of reproductive potential to use effective contraception during treatment and for at least 6 months after the final dose.

Adverse reactions (ARs) in $\geq 5\%$ of patients treated with LONSURF + bevacizumab and single-agent LONSURF¹

Adverse reaction	LONSURF + bevacizumab (n=246)		LONSURF (n=246)	
	All grades (%)	Grade 3-4 (%)	All grades (%)	Grade 3-4 (%)
General disorders and administration site conditions				
Fatigue ^a	45	5	37	8
Pyrexia	4.9	0	6	0.4
Gastrointestinal disorders				
Nausea	37	1.6	27	1.6
Diarrhea ^a	21	1.2	19	2.4
Vomiting ^a	19	0.8	15	1.6
Abdominal pain ^a	20	2.8	18	3.7
Constipation	11	0	11	0.8
Stomatitis ^a	13	<0.4	4.1	0
Infections and infestations^a	31	8	24	8
Metabolism and nutrition disorders				
Decreased appetite	20	<0.8	15	1.2
Musculoskeletal and connective tissue disorders				
Musculoskeletal pain ^a	18	1.2	11	2
Nervous system disorder				
Headache	8	0	3.7	0
Vascular disorders				
Hypertension ^a	11	6	2	1.2
Hemorrhage ^a	10	1.2	3.7	0.8
Renal and urinary disorders				
Proteinuria	6	0.8	1.2	0

^aRepresents a composite of multiple related terms.

Please see additional Important Safety Information throughout and full [Prescribing Information](#).

Dose modifications with LONSURF® (trifluridine and tipiracil) tablets¹

Withhold treatment before determining whether a dose reduction is needed to manage patients with ARs



When to *withhold* LONSURF

Before cycle

Do not initiate the cycle of LONSURF until:

- Absolute neutrophil count (ANC) is $\geq 1,500/\text{mm}^3$ or febrile neutropenia is resolved
- Platelet count is $\geq 75,000/\text{mm}^3$
- Grade 3 or 4 nonhematologic ARs are resolved to grade 0 or 1

During cycle

Within a treatment cycle, withhold LONSURF if the following occur:

- ANC $< 500/\text{mm}^3$ or febrile neutropenia
- Platelet count is $< 50,000/\text{mm}^3$
- Grade 3 or 4 nonhematologic ARs



When and how to *resume* LONSURF

After recovery, resume LONSURF after reducing the dose by 5 mg/m²/dose from the previous dose, if the following* occur:

- Febrile neutropenia
- Uncomplicated grade 4 neutropenia which has recovered to $\geq 1,500/\text{mm}^3$ that results in more than 1-week delay in start of next cycle
 - If it takes less than 1 week to recover to $\geq 1,500/\text{mm}^3$, do not reduce and resume at previous dose
- Uncomplicated grade 4 thrombocytopenia which has recovered to $\geq 75,000/\text{mm}^3$ that results in more than 1-week delay in start of next cycle
 - If it takes less than 1 week to recover to $\geq 75,000/\text{mm}^3$, do not reduce and resume at previous dose
- Nonhematologic grade 3 or 4 ARs
 - Except for grade 3 nausea and/or vomiting controlled by antiemetic therapy or grade 3 diarrhea responsive to antidiarrheal medication

*These are the only ARs that require a dose reduction.

A maximum of 3 dose reductions are permitted to a minimum dose of 20 mg/m² orally twice daily. But, in patients with severe renal impairment, only 1 dose reduction is permitted to a minimum dose of 15 mg/m² orally twice daily.¹

- Do not escalate LONSURF dosage after it has been reduced
- Permanently discontinue LONSURF in patients who are unable to tolerate a dose of 20 mg/m² orally twice daily
 - But, in patients with severe renal impairment, permanently discontinue LONSURF in patients who are unable to tolerate a dose of 15 mg/m² orally twice daily

For combination treatment in mCRC, modify the dosage of LONSURF as shown on the previous and current pages and/or modify bevacizumab administration as appropriate. Refer to the Prescribing Information for bevacizumab dosing administration information¹

Please see pages 8-10 for LONSURF AR monitoring and management examples.

IMPORTANT SAFETY INFORMATION

USE IN SPECIFIC POPULATIONS

Lactation: It is not known whether LONSURF or its metabolites are present in human milk. There are no data to assess the effects of LONSURF or its metabolites on the breastfed child or the effects on milk production. Because of the potential for serious adverse reactions in breastfed children, advise women not to breastfeed during treatment with LONSURF and for 1 day following the final dose.

Male Contraception: Because of the potential for genotoxicity, advise males with female partners of reproductive potential to use condoms during treatment with LONSURF and for at least 3 months after the final dose.

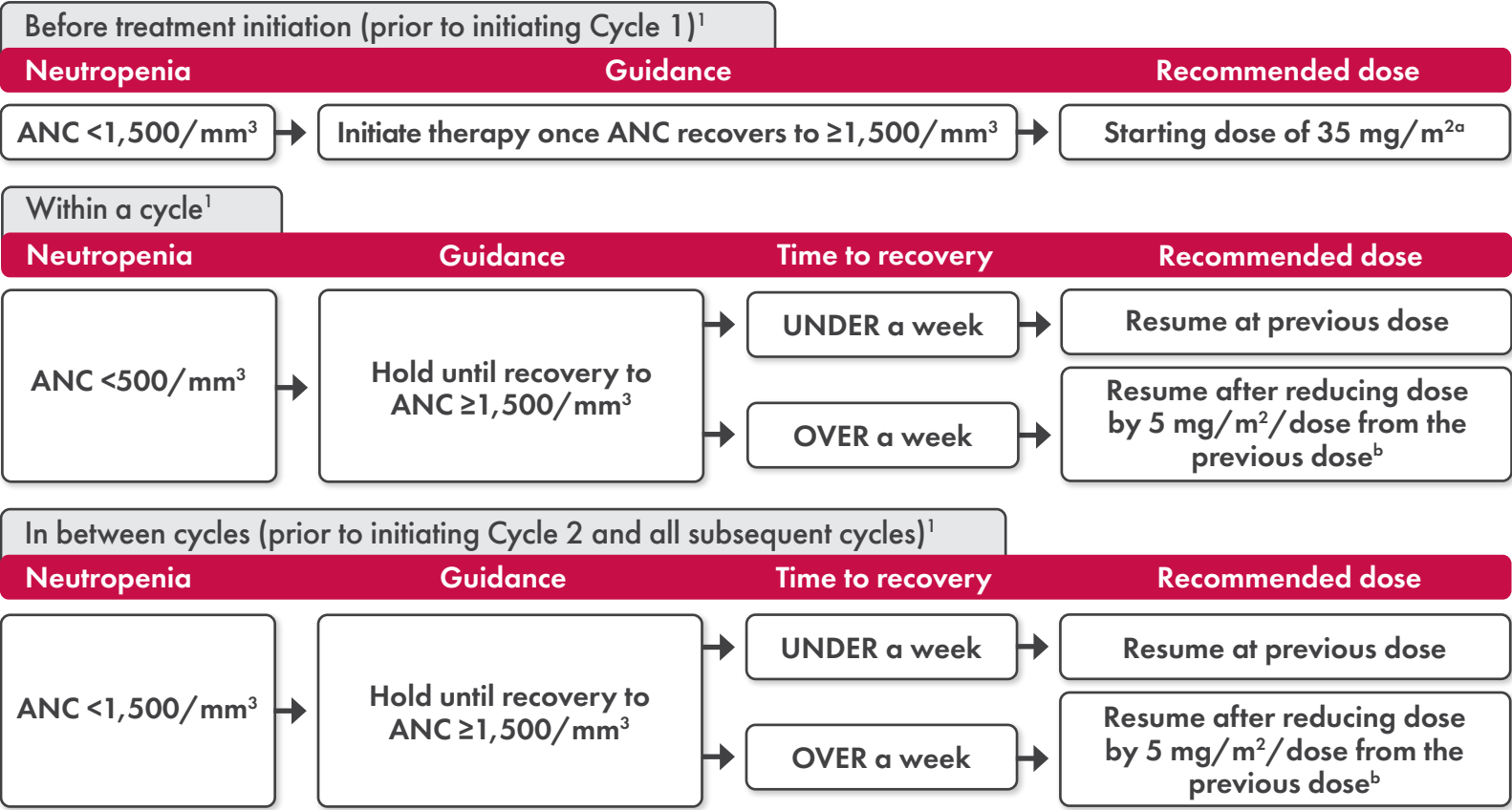
Please see additional Important Safety Information throughout and full [Prescribing Information](#).

Monitoring and managing myelosuppression^{1,4,5}

LONSURF® (trifluridine and tipiracil) tablets + bevacizumab and single-agent LONSURF can cause grade 3 or 4 myelosuppression, including neutropenia (52% and 39%, respectively) and thrombocytopenia (4% and 1%, respectively). Use your clinical judgment concerning the management of these laboratory abnormalities and all adverse reactions.¹

It is recommended to obtain complete blood counts prior to and on day 15 of each cycle of LONSURF and more frequently as clinically indicated. In the RECOURSE trial, patients with grade 3 or 4 neutropenia recovered to baseline from greatest severity recorded in a median of 8 days. Of the patients receiving LONSURF in the RECOURSE trial, 9% received G-CSF. In the SUNLIGHT trial, 29% of patients in the LONSURF + bevacizumab arm received G-CSF.

The following algorithms provide examples of how to manage neutropenia and thrombocytopenia in patients receiving LONSURF (with or without bevacizumab). In general, it is recommended to withhold LONSURF before determining if a dose reduction is necessary. For additional details, please see the “Dose modifications” section on pages 6-7 or view the full Prescribing Information at [LONSURF.com/PI](https://www.lonsurf.com/PI).



If your patient experiences neutropenic fever at any point after starting LONSURF, hold LONSURF until recovery and then resume after reducing the dose by 5 mg/m² from the previous dose.¹

Before treatment initiation (prior to initiating Cycle 1)¹

Thrombocytopenia

Guidance

Recommended dose

Platelets
<75,000/mm³

Initiate therapy once platelets
recover to ≥75,000/mm³

Starting dose of 35 mg/m^{2a}

Within a cycle¹

Thrombocytopenia

Guidance

Time to recovery

Recommended dose

Platelets
<50,000/mm³

Hold until recovery to
platelets ≥75,000/mm³

UNDER a week

Resume at previous dose

OVER a week

Resume after reducing dose
by 5 mg/m²/dose from the
previous dose^b

In between cycles (prior to initiating Cycle 2 and all subsequent cycles)¹

Thrombocytopenia

Guidance

Time to recovery

Recommended dose

Platelets
<75,000/mm³

Hold until recovery to
platelets ≥75,000/mm³

UNDER a week

Resume at previous dose

OVER a week

Resume after reducing dose
by 5 mg/m²/dose from the
previous dose^b

^aRefer to the Prescribing Information for dose adjustments for severe renal impairment and to calculate initial daily dose based on body surface area (BSA).

^bA maximum of 3 dose reductions are permitted. Permanently discontinue LONSURF in patients who are unable to tolerate a dose of 20 mg/m² orally twice daily. Do not escalate LONSURF dosage after it has been reduced.¹

IMPORTANT SAFETY INFORMATION

USE IN SPECIFIC POPULATIONS (continued)

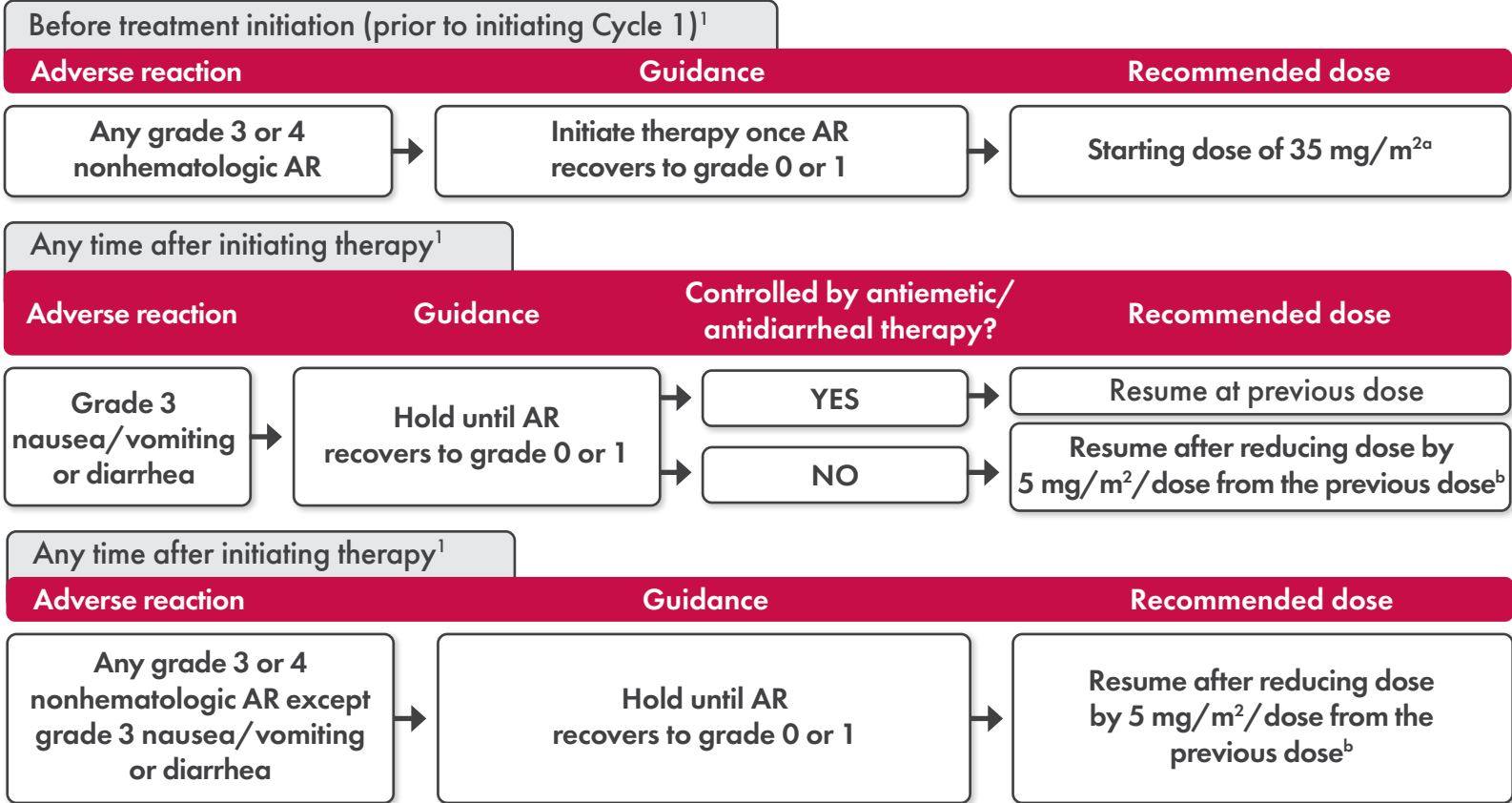
Geriatric Use: Patients 65 years of age or older who received LONSURF as a single agent had a higher incidence of the following hematologic laboratory abnormalities compared to patients younger than 65 years: Grade 3 or 4 neutropenia (46% vs 32%), Grade 3 anemia (20% vs 14%), and Grade 3 or 4 thrombocytopenia (6% vs 3%).

Please see additional Important Safety Information throughout and full [Prescribing Information](#).

Monitoring and managing nonhematologic adverse reactions (ARs)^{1,5}

While uncommon, LONSURF® (trifluridine and tipiracil) tablets + bevacizumab and single-agent LONSURF can cause grade 3 or 4 gastrointestinal (GI) disorders, including nausea (2% and 2%, respectively), vomiting (1% and 2%, respectively), diarrhea (1% and 2%, respectively), constipation (0% and 1%, respectively), stomatitis (<1% and 0%, respectively), and abdominal pain (3% and 4%, respectively). Use your clinical judgment concerning the management of these GI toxicities and all ARs. The clinical trial protocol for both the SUNLIGHT and RECOURSE trials allowed for the administration of antiemetic and antidiarrheal therapies based on physician discretion.

The following algorithms provide examples of how to manage nausea and/or vomiting, diarrhea, and all other nonhematologic ARs in patients receiving LONSURF (with or without bevacizumab). The guidance for grade 3 nausea and/or vomiting or diarrhea depends on whether the AR is controlled by antiemetic or antidiarrheal therapy. In general, it is recommended to withhold LONSURF before determining if a dose reduction is necessary. For additional details, please see the “Dose modifications” section on pages 6-7 or view the full Prescribing Information at [LONSURF.com/PI](https://www.lonsurf.com/PI).

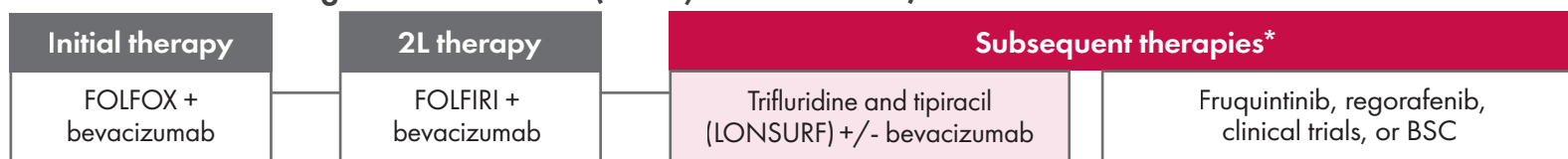


^aRefer to the Prescribing Information for dose adjustments for severe renal impairment and to calculate initial daily dose based on body surface area (BSA).
^bA maximum of 3 dose reductions are permitted. Permanently discontinue LONSURF in patients who are unable to tolerate a dose of 20 mg/m² orally twice daily. Do not escalate LONSURF dosage after it has been reduced.

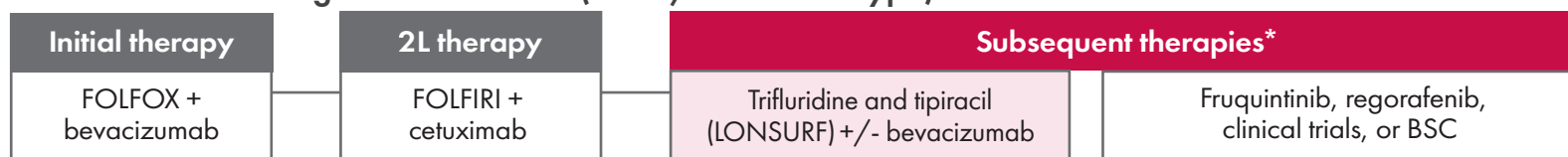
NCCN
RECOMMENDED

The National Comprehensive Cancer Network® (NCCN®) recommends trifluridine and tipiracil (LONSURF) +/- bevacizumab as NCCN Category 2A recommended options for a potential third-line or subsequent treatment in mCRC patients. The trifluridine and tipiracil (LONSURF) + bevacizumab combination is preferred.^{6,7}

Potential treatment algorithm for 3L use (KRAS/NRAS mutant)



Potential treatment algorithm for 3L use (KRAS/NRAS wild type)



Category 2A=based upon lower-level evidence, there is uniform NCCN consensus that the intervention is appropriate.

2L=second-line; 3L=third-line; BSC=best supportive care; FOLFIRI=leucovorin calcium (folinic acid), fluorouracil, and irinotecan hydrochloride; FOLFOX=leucovorin calcium (folinic acid), fluorouracil, and oxaliplatin; mCRC=metastatic colorectal cancer; NCCN=National Comprehensive Cancer Network.

*Fruquintinib or regorafenib or trifluridine and tipiracil +/- bevacizumab are treatment options for patients who have progressed through all available regimens.

Referenced with permission from the NCCN Clinical Practice Guidelines in Oncology (NCCN Guidelines®) for Rectal Cancer Version 3.2024. © National Comprehensive Cancer Network, Inc. 2024. All rights reserved. Accessed July 12, 2024. To view the most recent and complete version of the guideline, go online to NCCN.org.

Referenced with permission from the NCCN Clinical Practice Guidelines in Oncology (NCCN Guidelines®) for Colon Cancer Version 4.2024. © National Comprehensive Cancer Network, Inc. 2024. All rights reserved. Accessed July 12, 2024. To view the most recent and complete version of the guideline, go online to NCCN.org.

NCCN makes no warranties of any kind whatsoever regarding their content, use, or application and disclaims any responsibility for their application or use in any way.

IMPORTANT SAFETY INFORMATION

USE IN SPECIFIC POPULATIONS (continued)

Geriatric Use (continued): Patients 65 years of age or older who received LONSURF in combination with bevacizumab had a higher incidence of the following hematologic laboratory abnormalities compared to patients younger than 65 years: Grade 3 or 4 neutropenia (60% vs 46%) and Grade 3 or 4 thrombocytopenia (5% vs 4%).

Renal Impairment: No adjustment to the starting dosage of LONSURF is recommended in patients with mild or moderate renal impairment (CLcr of 30 to 89 mL/min). Reduce the starting dose of LONSURF for patients with severe renal impairment (CLcr of 15 to 29 mL/min) to a recommended dosage of 20 mg/m².

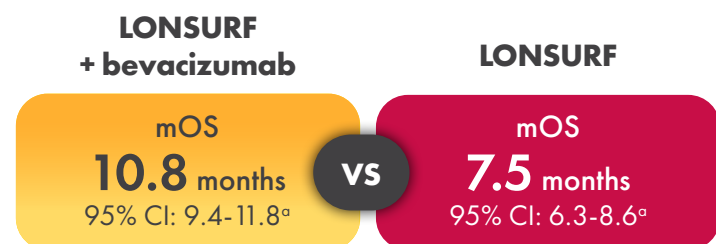
Hepatic Impairment: Do not initiate LONSURF in patients with baseline moderate or severe (total bilirubin > 1.5 times ULN and any AST) hepatic impairment. Patients with severe hepatic impairment (total bilirubin > 3 times ULN and any AST) were not studied. No adjustment to the starting dosage of LONSURF is recommended for patients with mild hepatic impairment.

Please see additional Important Safety Information throughout and full [Prescribing Information](#).

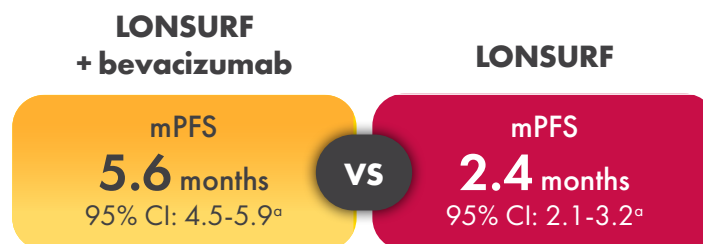
SUNLIGHT study design and efficacy

SUNLIGHT was an open-label randomized, phase 3 study that investigated the efficacy and safety of LONSURF® (trifluridine and tipiracil) tablets in combination with bevacizumab compared with single-agent LONSURF in patients with refractory mCRC.^{1,2}

Primary endpoint: **Overall Survival (OS)** (N=492)
($P<0.001$, HR=0.61)^{1,2}

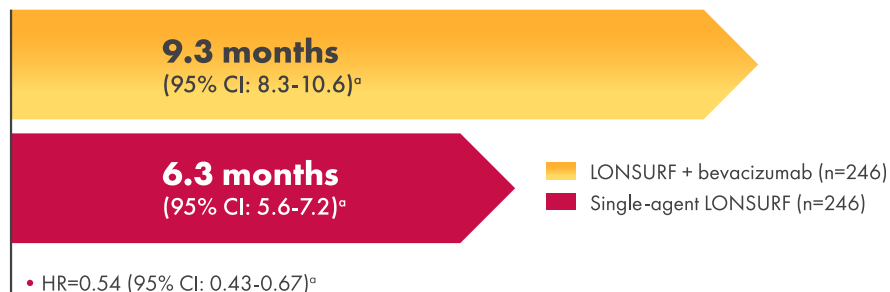


Secondary endpoint: **Progression-free Survival (PFS)** (N=492)
($P<0.001$, HR=0.44)^{1,2}



OS was defined as the time (in months) from randomization until death.²

Secondary endpoint: **Median time to worsening to an ECOG PS of ≥ 2 , months²**



^aThe widths of the confidence intervals have not been adjusted for multiplicity.²

- LONSURF + bevacizumab provided a **46% reduction** in risk of worsening to an ECOG PS of ≥ 2 vs single-agent LONSURF²
 - Since the analysis is not adjusted for multiplicity, results should be interpreted with caution and conclusions should be limited



Learn more about the efficacy and safety of LONSURF +/- bevacizumab in mCRC or LONSURF for gastric/GEJ cancer at LONSURFhcp.com

CI=confidence interval; ECOG PS=Eastern Cooperative Oncology Group Performance Status; HR=hazard ratio; mOS=median overall survival; mPFS=median progression-free survival.

How single-agent LONSURF and LONSURF + bevacizumab work



LONSURF is an antimetabolite combination agent^{1,8}

- **Trifluridine (FTD)** is a fluorinated thymidine analogue that is incorporated into the DNA and causes DNA dysfunction that leads to the death of cancer cells^{1,9*}
 - FTD is not a prodrug of 5-FU¹⁰
- **Tipiracil** inhibits the rapid degradation of trifluridine¹

*LONSURF can also have toxic effects on healthy, nontumor cells.

Bevacizumab is a vascular endothelial growth factor (VEGF) inhibitor³

- VEGF inhibitors prevent angiogenesis (the growth of new blood vessels) by selectively binding to circulating VEGF and thus inhibiting the binding of VEGF to its cell surface receptors (VEGFR)¹¹

IMPORTANT SAFETY INFORMATION

ADVERSE REACTIONS

Serious adverse reactions occurred in 25% of patients. The most frequent serious adverse reactions ($\geq 2\%$) were intestinal obstruction (2.8%), and COVID-19 (2%). Fatal adverse reactions occurred in 1.2% of patients who received LONSURF in combination with bevacizumab, including rectal fistula (0.4%), bowel perforation (0.4%) and atrial fibrillation (0.4%).

The most common adverse reactions or laboratory abnormalities ($\geq 10\%$ in incidence) in patients treated with single-agent LONSURF at a rate that exceeds the rate in patients receiving placebo in mCRC: anemia (77% vs 33%), neutropenia (67% vs 0.8%), asthenia/fatigue (52% vs 35%), nausea (48% vs 24%), thrombocytopenia (42% vs 8%), decreased appetite (39% vs 29%), diarrhea (32% vs 12%), vomiting (28% vs 14%), abdominal pain (21% vs 19%), and pyrexia (19% vs 14%). In metastatic gastric cancer or gastroesophageal junction (GEJ): neutropenia (66% vs 4%), anemia (63% vs 38%), nausea (37% vs 32%), thrombocytopenia (34% vs 9%), decreased appetite (34% vs 31%), vomiting (25% vs 20%), infections (23% vs 16%) and diarrhea (23% vs 14%).

Pulmonary emboli occurred more frequently in LONSURF-treated patients compared to placebo: in mCRC (2% vs 0%) and in metastatic gastric cancer and GEJ (3% vs 2%).

Interstitial lung disease (0.2%), including fatalities, has been reported in clinical studies and clinical practice settings in Asia.

The most common adverse reactions or laboratory abnormalities ($\geq 20\%$ in incidence) in patients treated with LONSURF in combination with bevacizumab vs LONSURF alone were neutropenia (80% vs 68%), anemia (68% vs 73%), thrombocytopenia (54% vs 29%), fatigue (45% vs 37%), nausea (37% vs 27%), increased aspartate aminotransferase (34% vs 28%), increased alanine aminotransferase (33% vs 23%), increased alkaline phosphate (31% vs 36%), decreased sodium (25% vs 20%), diarrhea (21% vs 19%), abdominal pain (20% vs 18%), and decreased appetite (20% vs 15%).

Please see additional Important Safety Information throughout and full [Prescribing Information](#).

LONSURF Treatment Kit

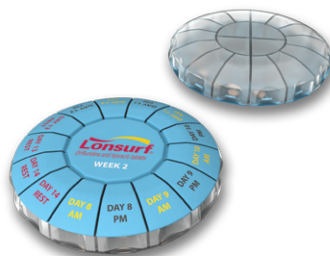
The LONSURF® (trifluridine and tipiracil) tablets Treatment Kit is designed to help patients get the most out of their treatment. These materials are not intended to replace the advice of healthcare professionals.

The LONSURF Treatment Kit includes the following items:



Patient and Caregiver Brochure

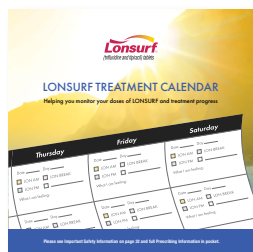
Contains important information for patients about how LONSURF can help, dosing, side effect management, and obtaining financial support



2 LONSURF Pill Organizers

Designed to help patients organize and keep track of their LONSURF tablets

Morning doses are labeled in yellow and evening doses are labeled in black. Rest days are labeled in red and do not open to remind your patients of LONSURF treatment breaks



Treatment Calendar

Helps patients organize their treatment schedule and keep track of treatment, as well as note any side effects or any other important dates



Thermometer

Encourages patients to check for a fever while taking LONSURF to monitor for infections such as febrile neutropenia



To learn more about the LONSURF Treatment Kit and additional resources for healthcare professionals, scan the QR code or visit www.lonsurfhcp.com/resources/professional-patient-resources

Taiho Oncology Patient Support™

Taiho Oncology Patient Support offers personalized services to help patients, caregivers, and healthcare professionals access Taiho Oncology products. This includes insurance coverage determination and help with medication affordability.



We offer 3 convenient ways to enroll in Taiho Oncology Patient Support services:



Via the HCP Portal

- **Enroll online**, directly through our HCP portal at TaihoPatientSupport.com
- **NOTE:** Login required. Please register prior to enrolling

OR



Download, Print, and Fax

- Download and fill in the **Enrollment Form**, and print it out to complete
- Fax the completed form to **1-844-287-2559**

OR



By Phone

- Call **1-844-TAIHO-4U** (1-844-824-4648) for help with enrollment

Taiho Oncology Patient Support can assist with:



Insurance Coverage Support

- Benefits investigation
- Prior authorization assistance
- Appeals assistance
- Coordination of prescriptions with pharmacies



Patient Affordability Assistance^a

- \$0 co-pay program enrollment for eligible commercially insured patients
- Patient assistance program designed to provide free medication to eligible patients who are uninsured or underinsured
- Referrals to third-party foundations for co-pay or other assistance based on eligibility and additional criteria
- Referrals to Medicare Part D Low-Income Subsidy (LIS)/Extra Help Program



Personalized Nurse Support^b

- One-on-one nurse educational support for patients, available via opt-in

HCP=healthcare professional.

^aVisit TaihoPatientSupport.com to see full eligibility criteria.

^bIf this option is selected on the Patient Enrollment Form, a Nurse Navigator will be assigned to provide telephone support and will address general inquiries about LONSURF treatment.

Please see additional Important Safety Information throughout and full [Prescribing Information](#).

DOSING AND ADVERSE REACTION MANAGEMENT GUIDE



For more information, scan the QR code
or visit [LONSURFhcp.com](https://www.LONSURFhcp.com)

Please see additional Important Safety Information throughout and full [Prescribing Information](#).

References: 1. LONSURF [package insert]. Princeton, NJ: Taiho Oncology, Inc.; 2023. 2. Prager GW, Taieb J, Fakih M, et al. Trifluridine–tipiracil and bevacizumab in refractory metastatic colorectal cancer. *N Engl J Med*. 2023;388(18):1657-1667. 3. Avastin [package insert]. South San Francisco, CA: Genentech, Inc.; 2022. 4. Van Cutsem E, Hochster H, Shitara K, et al. Pooled safety analysis from phase III studies of trifluridine/tipiracil in patients with metastatic gastric or gastroesophageal junction cancer and metastatic colorectal cancer. *ESMO Open*. 2022;7(6):100633. 5. Lee JJ, Chu E. Adherence, dosing, and managing toxicities with trifluridine/tipiracil (TAS-102). *Clin Colorectal Cancer*. 2017;16(2):85-92. doi:10.1016/j.clcc.2017.01.003. 6. Referenced with permission from the *NCCN Clinical Practice Guidelines in Oncology (NCCN Guidelines®) for Colon Cancer V.4.2024*. © National Comprehensive Cancer Network, Inc. 2024. All rights reserved. Accessed July 12, 2024. To view the most recent and complete version of the guideline, go online to NCCN.org. 7. Referenced with permission from the *NCCN Clinical Practice Guidelines in Oncology (NCCN Guidelines®) for Rectal Cancer V.3.2024*. © National Comprehensive Cancer Network, Inc. 2024. All rights reserved. Accessed July 12, 2024. To view the most recent and complete version of the guideline, go online to NCCN.org. 8. Uboha N, Hochster HS. TAS-102: a novel antimetabolite for the 21st century. *Future Oncol*. 2016;12(2):153-163. 9. Matsuoka K, Imori M, Niimi S, et al. Trifluridine induces p53-dependent sustained G2, phase arrest with its massive misincorporation into DNA and few DNA strand breaks. *Mol Cancer Ther*. 2015;14(4):1004-1013. 10. Lenz H-J, Stintzing S, Loupakis F. TAS-102, a novel antitumor agent: a review of the mechanism of action. *Cancer Treat Rev*. 2015;41(9):777-783. 11. Ferrara N. Vascular endothelial growth factor: basic science and clinical progress. *Endocr Rev*. 2004;25(4):581-611.

LONSURF is a registered trademark of Taiho Pharmaceutical Co., Ltd., used under license by Taiho Oncology, Inc.



TAIHO ONCOLOGY

© TAIHO ONCOLOGY, INC.

08/2024

All rights reserved.

LON-PM-US-1845

Lonsurf[®]
(trifluridine and tipiracil) tablets

HIGHLIGHTS OF PRESCRIBING INFORMATION

These highlights do not include all the information needed to use LONSURF safely and effectively. See full prescribing information for LONSURF.

LONSURF (trifluridine and tipiracil) tablets, for oral use

Initial U.S. Approval: 2015

RECENT MAJOR CHANGES

Indications and Usage (1.1)	8/2023
Dosage and Administration (2)	8/2023
Warnings and Precaution (5.1)	8/2023

INDICATIONS AND USAGE

LONSURF is a combination of trifluridine, a nucleoside metabolic inhibitor, and tipiracil, a thymidine phosphorylase inhibitor, indicated for the treatment of adult patients with:

- metastatic colorectal cancer as a single agent or in combination with bevacizumab who have been previously treated with fluoropyrimidine-, oxaliplatin- and irinotecan-based chemotherapy, an anti-VEGF biological therapy, and if RAS wild-type, an anti-EGFR therapy. (1.1)
- metastatic gastric or gastroesophageal junction adenocarcinoma previously treated with at least two prior lines of chemotherapy that included a fluoropyrimidine, a platinum, either a taxane or irinotecan, and if appropriate, HER2/neu-targeted therapy. (1.2)

DOSAGE AND ADMINISTRATION

- Recommended Dosage:** 35 mg/m²/dose orally twice daily with food on Days 1 through 5 and Days 8 through 12 of each 28-day cycle. (2.1)

DOSAGE FORMS AND STRENGTHS

Tablets:

- 15 mg trifluridine/6.14 mg tipiracil (3)
- 20 mg trifluridine/8.19 mg tipiracil (3)

CONTRAINDICATIONS

None. (4)

WARNINGS AND PRECAUTIONS

- Severe Myelosuppression:** Obtain complete blood counts prior to and on Day 15 of each cycle. Withhold and resume at next lower LONSURF dosage as recommended. (2.1, 5.1)
- Embryo-Fetal Toxicity:** Can cause fetal harm. Advise females of reproductive potential of the potential risk to a fetus and to use effective contraception. (5.2, 8.1, 8.3)

ADVERSE REACTIONS

The most common adverse reactions or laboratory abnormalities for single agent LONSURF (≥10%) are neutropenia, anemia, thrombocytopenia, fatigue, nausea, decreased appetite, diarrhea, vomiting, abdominal pain, and pyrexia. (6.1)

The most common adverse reactions or laboratory abnormalities for LONSURF in combination with bevacizumab (≥20%) are neutropenia, anemia, thrombocytopenia, fatigue, nausea, increased AST, increased ALT, increased alkaline phosphatase, decreased sodium, diarrhea, abdominal pain, and decreased appetite. (6.1)

To report SUSPECTED ADVERSE REACTIONS, contact Taiho Oncology, Inc. at 1-844-878-2446 or FDA at 1-800-FDA-1088 or www.fda.gov/medwatch.

USE IN SPECIFIC POPULATIONS

- Lactation:** Advise not to breastfeed. (8.2)
- Geriatric Use:** For LONSURF as a single agent, Grade 3 or 4 neutropenia, Grade 3 anemia and Grade 3 or 4 thrombocytopenia occurred more commonly in patients 65 years or older. (8.5) For LONSURF in combination with bevacizumab Grade 3 or 4 neutropenia and Grade 3 or 4 thrombocytopenia occurred more commonly in patients 65 years or older. (8.5)
- Hepatic Impairment:** Do not initiate LONSURF in patients with baseline moderate or severe hepatic impairment. (8.7)
- Renal Impairment:** Reduce LONSURF dose in patients with severe renal impairment. (8.6)

See 17 for PATIENT COUNSELING INFORMATION and FDA-approved patient labeling

Revised: 8/2023

FULL PRESCRIBING INFORMATION: CONTENTS*

1 INDICATIONS AND USAGE

- 1.1 Metastatic Colorectal Cancer
- 1.2 Metastatic Gastric Cancer

2 DOSAGE AND ADMINISTRATION

- 2.1 Recommended Dosage
- 2.2 Dosage Modifications for Adverse Reactions
- 2.3 Recommended Dosage for Renal Impairment

3 DOSAGE FORMS AND STRENGTHS

4 CONTRAINDICATIONS

5 WARNINGS AND PRECAUTIONS

- 5.1 Severe Myelosuppression
- 5.2 Embryo-Fetal Toxicity

6 ADVERSE REACTIONS

- 6.1 Clinical Trials Experience

8 USE IN SPECIFIC POPULATIONS

- 8.1 Pregnancy
- 8.2 Lactation
- 8.3 Females and Males of Reproductive Potential
- 8.4 Pediatric Use

8.5 Geriatric Use

8.6 Renal Impairment

8.7 Hepatic Impairment

11 DESCRIPTION

12 CLINICAL PHARMACOLOGY

- 12.1 Mechanism of Action
- 12.2 Pharmacodynamics
- 12.3 Pharmacokinetics

13 NONCLINICAL TOXICOLOGY

- 13.1 Carcinogenesis, Mutagenesis, Impairment of Fertility

14 CLINICAL STUDIES

- 14.1 Metastatic Colorectal Cancer
- 14.2 Metastatic Gastric Cancer

15 REFERENCES

16 HOW SUPPLIED/STORAGE AND HANDLING

17 PATIENT COUNSELING INFORMATION

*Sections or subsections omitted from the full prescribing information are not listed.

FULL PRESCRIBING INFORMATION

1 INDICATIONS AND USAGE

1.1 Metastatic Colorectal Cancer

LONSURF, as a single agent or in combination with bevacizumab, is indicated for the treatment of adult patients with metastatic colorectal cancer previously treated with fluoropyrimidine-, oxaliplatin- and irinotecan-based chemotherapy, an anti-VEGF biological therapy, and if RAS wild-type, an anti-EGFR therapy.

1.2 Metastatic Gastric Cancer

LONSURF is indicated for the treatment of adult patients with metastatic gastric or gastroesophageal junction adenocarcinoma previously treated with at least two prior lines of chemotherapy that included a fluoropyrimidine, a platinum, either a taxane or irinotecan, and if appropriate, HER2/neu-targeted therapy.

2 DOSAGE AND ADMINISTRATION

2.1 Recommended Dosage

The recommended dosage of LONSURF as a single agent or in combination with bevacizumab is 35 mg/m² up to a maximum of 80 mg per dose (based on the trifluridine component) orally twice daily with food on Days 1 through 5 and Days 8 through 12 of each 28-day cycle until disease progression or unacceptable toxicity. Round dose to the nearest 5 mg increment.

Refer to the Prescribing Information for bevacizumab dosing information.

Instruct patients to swallow LONSURF tablets whole.

Instruct patients not to retake doses of LONSURF that are vomited or missed and to continue with the next scheduled dose.

LONSURF is a cytotoxic drug. Follow applicable special handling and disposal procedures.¹

Table 1 shows the calculated initial daily dose based on body surface area (BSA).

Table 1: Recommended Dosage According to Body Surface Area (BSA)

BSA (m ²)	Total daily dose (mg)	Dose (mg) administered twice daily	Tablets per dose	
			15 mg	20 mg
< 1.07	70	35	1	1
1.07 – 1.22	80	40	0	2
1.23 – 1.37	90	45	3	0
1.38 – 1.52	100	50	2	1
1.53 – 1.68	110	55	1	2
1.69 – 1.83	120	60	0	3
1.84 – 1.98	130	65	3	1
1.99 – 2.14	140	70	2	2
2.15 - 2.29	150	75	1	3
≥2.30	160	80	0	4

2.2 Dosage Modifications for Adverse Reactions

Obtain complete blood cell counts prior to and on Day 15 of each cycle [*see Warnings and Precautions (5.1)*].

Do not initiate the cycle of LONSURF until:

- Absolute neutrophil count (ANC) greater than or equal to 1,500/mm³ or febrile neutropenia is resolved
- Platelets greater than or equal to 75,000/mm³
- Grade 3 or 4 non-hematological adverse reactions are resolved to Grade 0 or 1

Within a treatment cycle, withhold LONSURF for any of the following:

- Absolute neutrophil count (ANC) less than 500/mm³ or febrile neutropenia
- Platelets less than 50,000/mm³
- Grade 3 or 4 non-hematologic adverse reaction

After recovery, resume LONSURF after reducing the dose by 5 mg/m²/dose from the previous dose, if the following occur:

- Febrile neutropenia
- Uncomplicated Grade 4 neutropenia (which has recovered to greater than or equal to 1,500/mm³) or thrombocytopenia (which has recovered to greater than or equal to 75,000/mm³) that results in more than 1 week delay in start of next cycle

- Non-hematologic Grade 3 or Grade 4 adverse reaction except for Grade 3 nausea and/or vomiting controlled by antiemetic therapy or Grade 3 diarrhea responsive to antidiarrheal medication

A maximum of 3 dose reductions are permitted. Permanently discontinue LONSURF in patients who are unable to tolerate a dose of 20 mg/m² orally twice daily. Do not escalate LONSURF dosage after it has been reduced.

Refer to the bevacizumab prescribing information for dose modifications for adverse reactions associated with bevacizumab.

2.3 Recommended Dosage for Renal Impairment

Severe Renal Impairment

In patients with severe renal impairment [creatinine clearance (CL_{cr}) of 15 to 29 mL/min as determined by the Cockcroft-Gault formula], the recommended dosage is 20 mg/m² (based on the trifluridine component) orally twice daily with food on Days 1 through 5 and Days 8 through 12 of each 28-day cycle ([Table 2](#)) [*see Use in Specific Populations (8.6) and Clinical Pharmacology (12.3)*]. Reduce dose to 15 mg/m² twice daily in patients with severe renal impairment who are unable to tolerate a dose of 20 mg/m² twice daily ([Table 2](#)). Permanently discontinue LONSURF in patients who are unable to tolerate a dose of 15 mg/m² twice daily.

Table 2: Recommended Dosage for Severe Renal Impairment According to BSA

BSA (m ²)	Total daily dose (mg)	Dose (mg) administered twice daily	Tablets per dose	
			15 mg	20 mg
For a dose of 20 mg/m ² twice daily:				
< 1.14	40	20	0	1
1.14 – 1.34	50	25*	2 in the evening*	1 in the morning*
1.35 – 1.59	60	30	2	0
1.60 – 1.94	70	35	1	1
1.95 – 2.09	80	40	0	2
2.10 – 2.34	90	45	3	0
≥ 2.35	100	50	2	1
For a dose of 15 mg/m ² twice daily:				
< 1.15	30	15	1	0
1.15 – 1.49	40	20	0	1
1.50 – 1.84	50	25*	2 in the evening*	1 in the morning*
1.85 – 2.09	60	30	2	0
2.10 – 2.34	70	35	1	1
≥ 2.35	80	40	0	2

* For a total daily dose of 50 mg, instruct patients to take 1 x 20-mg tablet in the morning and 2 x 15-mg tablets in the evening.

3 DOSAGE FORMS AND STRENGTHS

Tablets:

- 15 mg trifluridine/6.14 mg tipiracil: white, biconvex, round, film-coated, imprinted with '15' on one side, and '102' and '15 mg' on the other side, in gray ink.
- 20 mg trifluridine/8.19 mg tipiracil: pale red, biconvex, round, film-coated, imprinted with '20' on one side, and '102' and '20 mg' on the other side, in gray ink.

4 CONTRAINDICATIONS

None.

5 WARNINGS AND PRECAUTIONS

5.1 Severe Myelosuppression

In the 1114 patients who received LONSURF as a single agent, LONSURF caused severe or life-threatening myelosuppression (Grade 3-4) consisting of neutropenia (38%), anemia (17%), thrombocytopenia (4%) and febrile neutropenia (3%). Three patients (0.3%) died due to neutropenic infection/sepsis; four other patients (0.5%) died due to septic shock. A total of 14% of patients received granulocyte-colony stimulating factors.

In the 246 patients who received LONSURF in combination with bevacizumab, LONSURF caused severe or life-threatening myelosuppression (Grade 3-4) consisting of neutropenia (52%), anemia (5%), thrombocytopenia (4%) and febrile neutropenia (0.4%). One patient (0.4%) died due to abdominal sepsis and two other patients (0.8%) died due to septic shock. A total of 29% of patients received granulocyte-colony stimulating factors. Obtain complete blood counts prior to and on Day 15 of each cycle of LONSURF and more frequently as clinically indicated.

Withhold LONSURF for severe myelosuppression and resume at the next lower dosage [*see Dosage and Administration (2.2)*].

5.2 Embryo-Fetal Toxicity

Based on animal studies and its mechanism of action, LONSURF can cause fetal harm when administered to a pregnant woman. Trifluridine/tipiracil caused embryo-fetal lethality and embryo-fetal toxicity in pregnant rats when orally administered during gestation at dosage levels resulting in exposures lower than those achieved at the recommended dosage of 35 mg/m² twice daily. Advise pregnant women of the potential risk to the fetus. Advise females of reproductive potential to use an effective method of contraception during treatment with LONSURF and for at least 6 months after the final dose [*see Use in Specific Populations (8.1, 8.3)*].

6 ADVERSE REACTIONS

The following clinically significant adverse reactions are described elsewhere in the labeling:

- Severe Myelosuppression [*see Warnings and Precautions (5.1)*]

6.1 Clinical Trials Experience

Because clinical trials are conducted under widely varying conditions, adverse reaction rates observed in the clinical trials of a drug cannot be directly compared to rates in the clinical trials of another drug and may not reflect the rates observed in practice.

The data described in the WARNINGS AND PRECAUTIONS section and below reflect exposure to LONSURF at the recommended dose in 533 patients with metastatic colorectal cancer in RECURSE, 246 patients with metastatic colorectal cancer treated with LONSURF as monotherapy in SUNLIGHT and 335 patients with metastatic gastric cancer in TAGS. Among the 1114 patients who received LONSURF as a single agent, 12% were exposed for 6 months or longer and 1% were exposed for 12 months or longer. The most common adverse reactions or laboratory abnormalities ($\geq 10\%$) were neutropenia, anemia, thrombocytopenia, fatigue, nausea, decreased appetite, diarrhea, vomiting, abdominal pain, and pyrexia.

Among the 246 patients with metastatic colorectal cancer treated with LONSURF in combination with bevacizumab in SUNLIGHT, 39% were exposed for 6 months or longer, and 14% were exposed for 12 months or longer. The most common adverse reactions or laboratory abnormalities ($\geq 20\%$) were neutropenia, anemia, thrombocytopenia, fatigue, nausea, increased AST, increased ALT, increased alkaline phosphatase, decreased sodium, diarrhea, abdominal pain, and decreased appetite.

Metastatic Colorectal Cancer

LONSURF as a single agent

The safety of LONSURF was evaluated in RECOURSE, a randomized (2:1), double-blind, placebo-controlled trial in patients with previously treated metastatic colorectal cancer [see *Clinical Studies* ([14.1](#))]. Patients received LONSURF 35 mg/m²/dose (n=533) or placebo (n=265) twice daily on Days 1 through 5 and Days 8 through 12 of each 28-day cycle. In RECOURSE, 12% of patients received LONSURF for more than 6 months and 1% of patients received LONSURF for more than 1 year.

The study population characteristics were: median age 63 years; 61% male; 57% White, 35% Asian, and 1% Black.

The most common adverse reactions or laboratory abnormalities ($\geq 10\%$ in incidence) in patients treated with LONSURF at a rate that exceeds the rate in patients receiving placebo were anemia, neutropenia, asthenia/fatigue, nausea, thrombocytopenia, decreased appetite, diarrhea, vomiting, abdominal pain, and pyrexia.

In RECOURSE, 3.6% of patients discontinued LONSURF for an adverse reaction and 14% of patients required a dose reduction. The most common adverse reactions or laboratory abnormalities leading to dose reduction were neutropenia, anemia, febrile neutropenia, fatigue, and diarrhea.

[Table 3](#) and [Table 4](#) list the adverse reactions and laboratory abnormalities (graded using CTCAE v4.03), respectively, observed in RECOURSE.

Table 3: Adverse Reactions ($\geq 5\%$) in Patients Receiving LONSURF and at a Higher Incidence ($>2\%$) than in Patients Receiving Placebo in RECOURSE

Adverse Reactions	LONSURF (N=533)		Placebo (N=265)	
	All Grades (%)	Grades 3-4* (%)	All Grades (%)	Grades 3-4* (%)
General				
Asthenia/fatigue	52	7	35	9
Pyrexia	19	1.3	14	0.4
Gastrointestinal				
Nausea	48	1.9	24	1.1
Diarrhea	32	3	12	0.4
Vomiting	28	2.1	14	0.4
Abdominal pain	21	2.4	19	3.8
Stomatitis	8	0.4	6	0
Metabolism and nutrition				
Decreased appetite	39	3.6	29	4.9
Infections[†]	27	7	16	4.9
Nervous system				
Dysgeusia	7	0	2.3	0
Skin and subcutaneous tissue				
Alopecia	7	0	1.1	0

*No Grade 4 definition for nausea, abdominal pain, or fatigue in National Cancer Institute Common Terminology

[†]Incidence reflects 64 preferred terms in the Infections and Infestations system organ class.

Table 4: Select Laboratory Abnormalities in RECURSE

Laboratory Parameter*	LONSURF		Placebo	
	All Grades (%)	Grades 3-4 (%)	All Grades (%)	Grades 3-4 (%)
Hematologic				
Anemia [†]	77	18	33	3
Neutropenia	67	38	0.8	0
Thrombocytopenia	42	5	8	0.4

* Worst Grade at least one grade higher than baseline, with percentages based on number of patients with post-baseline samples, which may be <533 (LONSURF) or 265 (placebo)

[†] One Grade 4 anemia adverse reaction based on clinical criteria was reported

In RECURSE, pulmonary emboli occurred more frequently in LONSURF-treated patients (2%) compared to no patients on placebo.

LONSURF in combination with bevacizumab

The safety of LONSURF in combination with bevacizumab was evaluated in SUNLIGHT, an international, randomized, open label study in patients with previously treated metastatic colorectal cancer [see *Clinical Studies* (14.1)].

The study population characteristics were: median age 63 years (20 to 90 years); 52% male; 88% White, 1.4% Black, 0.2% Asian, 0.2% American Indian or Alaska Native, and 9.6% were unknown; and baseline ECOG performance status 0 (46%), 1 (54%), or 2 (0.2%).

Serious adverse reactions occurred in 25% of patients. The most frequent serious adverse reactions ($\geq 2\%$) were intestinal obstruction (2.8%), and COVID-19 (2%). Fatal adverse reactions occurred in 1.2% of patients who received LONSURF in combination with bevacizumab, including rectal fistula (0.4%), bowel perforation (0.4%) and atrial fibrillation (0.4%).

Permanent treatment discontinuation due to an adverse reaction occurred in 13% of patients. The adverse reaction which resulted in permanent treatment discontinuation in $\geq 2\%$ of patients was fatigue.

Dosage reductions due to an adverse reaction or laboratory abnormality occurred in 7% of patients. At least one dose reduction in 3.7% of patients was required for neutropenia.

Dosage interruptions due to an adverse reaction occurred in 11% of patients who received LONSURF in combination with bevacizumab. The adverse reaction that required dosage interruption in $\geq 2\%$ of patients was nausea.

The most common adverse reactions or laboratory abnormalities ($\geq 20\%$ in incidence) in patients treated with LONSURF in combination with bevacizumab were neutropenia, anemia, thrombocytopenia, fatigue, nausea, increased aspartate aminotransferase, increased alanine aminotransferase, increased alkaline phosphatase, decreased sodium, diarrhea, abdominal pain, and decreased appetite. Table 5 and Table 6 list the adverse reactions and laboratory abnormalities, respectively, observed in SUNLIGHT.

Table 5: Adverse Reactions (≥5%) in SUNLIGHT

Adverse Reactions	LONSURF + Bevacizumab (N=246) (%)		LONSURF (N=246) (%)	
	All Grades	Grade 3 or 4	All Grades	Grade 3 or 4
Gastrointestinal disorders				
Nausea	37	1.6	27	1.6
Diarrhea*	21	1.2	19	2.4
Abdominal pain*	20	2.8	18	3.7
Vomiting*	19	0.8	15	1.6
Stomatitis*	13	<0.4	4.1	0
Constipation	11	0	11	0.8
General disorders and administration site conditions				
Fatigue*	45	5	37	8
Pyrexia	4.9	0	6	0.4
Infections and infestations*	31	8	24	8
Metabolism and nutrition disorders				
Decreased appetite	20	<0.8	15	1.2
Musculoskeletal and connective tissue disorders				
Musculoskeletal pain*	18	1.2	11	2
Nervous system disorder				
Headache	8	0	3.7	0
Vascular disorders				
Hypertension*	11	6	2	1.2
Hemorrhage*	10	1.2	3.7	0.8
Renal and urinary disorders				
Proteinuria	6	0.8	1.2	0

*Represents a composite of multiple related terms

Table 6: Select Laboratory Abnormalities (≥10%) in SUNLIGHT

Laboratory parameters	LONSURF + Bevacizumab ^a		LONSURF ^a	
	All Grades (%)	Grade 3 or 4 (%)	All Grades (%)	Grade 3 or 4 (%)
Hematology				
Neutrophils decreased	80	52	68	39
Hemoglobin decreased	68	5	73	11
Platelets decreased	54	4.1	29	0.8
Chemistry				
Aspartate aminotransferase increased	34	2.1	28	1.2
Alanine aminotransferase increased	33	3.3	23	0.4
Alkaline phosphatase increased	31	0.8	36	1.2
Sodium decreased	25	2.1	20	3.3
Potassium increased	17	0	15	0
Potassium decreased	12	0.8	12	2.5
Creatinine increased	12	0.8	15	0

^aEach test incidence is based on the number of patients who had both baseline and at least one on-study laboratory measurement available: LONSURF + bevacizumab group (n=242 patients) and LONSURF group (range: 240 to 242 patients).

Metastatic Gastric Cancer

The safety of LONSURF was evaluated in TAGS, an international, randomized (2:1), double-blind, placebo-controlled trial in patients with metastatic gastric or gastroesophageal junction (GEJ) adenocarcinoma who were previously treated with at least 2 prior chemotherapy regimens for advanced disease [see *Clinical Studies* (14.2)]. Previous treatments must have included a fluoropyrimidine, a platinum, and either a taxane or irinotecan. Patients with HER2/neu-positive tumors must have received prior HER2/neu-targeted therapy, if available. Adjuvant chemotherapy could be counted as one prior regimen in patients who had recurrence during or within 6 months of completion of the adjuvant chemotherapy. Patients received LONSURF 35 mg/m²/dose (n=335) or placebo (n=168) twice daily on Days 1 through 5 and Days 8 through 12 of each 28-day cycle with best supportive care. In TAGS, 10% of patients received LONSURF for more than 6 months and 0.9% of patients received LONSURF for more than 1 year.

The study population characteristics were: median age 63 years (24 to 89 years); 73% male; 70% White, 16% Asian, and 1% Black.

The most common adverse reactions or laboratory abnormalities (≥10% in incidence) in patients treated with LONSURF at a rate that exceeds the rate in patients receiving placebo were neutropenia, anemia, nausea, decreased appetite, thrombocytopenia, vomiting, and diarrhea.

In TAGS, 13% of patients discontinued LONSURF for an adverse reaction and 11% of patients required a dose reduction. The most common adverse reactions or laboratory abnormalities leading to dose reduction were neutropenia, anemia, febrile neutropenia, and diarrhea.

Table 7 and 8 list the adverse reactions and laboratory abnormalities (graded using CTCAE v4.03), respectively, observed in TAGS.

Table 7: Adverse Reactions (≥5%) in Patients Receiving LONSURF and at a Higher Incidence (>2%) than in Patients Receiving Placebo in TAGS

Adverse Reactions	LONSURF (N=335)		Placebo (N=168)	
	All Grades (%)	Grades 3-4* (%)	All Grades (%)	Grades 3-4* (%)
Gastrointestinal				
Nausea	37	3	32	3
Vomiting	25	4	20	2
Diarrhea	23	3	14	2
Metabolism and nutrition				
Decreased appetite	34	9	31	7
Infections[†]	23	5	16	5

*No Grade 4 definition for nausea or fatigue in NCI CTCAE, version 4.03.

[†]Incidence reflects 46 preferred terms in the Infections and Infestations system organ class.

Table 8: Laboratory Abnormalities in TAGS

Laboratory Parameter*	LONSURF		Placebo	
	All Grades (%)	Grades 3-4 (%)	All Grades (%)	Grades 3-4 (%)
Hematologic				
Neutropenia	66	38	4	0
Anemia [†]	63	19	38	7
Thrombocytopenia	34	6	9	0

* Worst Grade at least one Grade higher than baseline, with percent based on number of patients with post-baseline samples which may be <335 (LONSURF) or 168 (placebo)

[†] Anemia: No Grade 4 definition in CTCAE, v4.03

In TAGS, pulmonary emboli occurred more frequently in LONSURF-treated patients (3.1%) compared to 1.8% for patients on placebo.

Additional Clinical Experience

Interstitial lung disease was reported in 15 (0.2%) patients, 3 of which were fatal, among approximately 7,000 patients exposed to LONSURF in clinical studies and clinical practice settings in Asia.

8 USE IN SPECIFIC POPULATIONS

8.1 Pregnancy

Risk Summary

Based on animal data and its mechanism of action [see *Clinical Pharmacology* (12.2)], LONSURF can cause fetal harm. LONSURF caused embryo-fetal lethality and embryo-fetal toxicity in pregnant rats when given during gestation at doses resulting in exposures lower than or similar to human exposures at the recommended clinical dose (see Data). There are no available data on LONSURF use in pregnant women. Advise pregnant women of the potential risk to a fetus.

In the U.S. general population, the estimated background risk of major birth defects and miscarriage in clinically recognized pregnancies is 2-4% and 15-20%, respectively.

Data

Animal Data

Trifluridine/tipiracil was administered orally once daily to female rats during organogenesis at dose levels of 15, 50, and 150 mg/kg [trifluridine (FTD) equivalent]. Decreased fetal weight was observed at FTD doses ≥ 50 mg/kg (approximately 0.33 times the FTD exposure at the clinical dose of 35 mg/m² twice daily). At the FTD dose of 150 mg/kg (approximately 0.92 times the FTD exposure at the clinical dose of 35 mg/m² twice daily) embryoletality and structural anomalies (kinked tail, cleft palate, ectrodactyly, anasarca, alterations in great vessels, and skeletal anomalies) were observed.

8.2 Lactation

Risk Summary

There are no data on the presence of trifluridine, tipiracil or its metabolites in human milk or its effects on the breastfed child or on milk production. In nursing rats, trifluridine and tipiracil or their metabolites were present in breast milk (*see Data*). Because of the potential for serious adverse reactions in breastfed children, advise women not to breastfeed during treatment with LONSURF and for 1 day following the final dose.

Data

Radioactivity was excreted in the milk of nursing rats dosed with trifluridine/tipiracil containing ¹⁴C-FTD or ¹⁴C-tipiracil (TPI). Levels of FTD-derived radioactivity were as high as approximately 50% of the exposure in maternal plasma an hour after dosing with trifluridine/tipiracil and were approximately the same as those in maternal plasma for up to 12 hours following dosing. Exposure to TPI-derived radioactivity was higher in milk than in maternal plasma beginning 2 hours after dosing and continuing for at least 12 hours following administration of trifluridine/tipiracil.

8.3 Females and Males of Reproductive Potential

Pregnancy Testing

Verify pregnancy status in females of reproductive potential prior to initiating LONSURF [see *Use in Specific Populations* (8.1)].

Contraception

LONSURF can cause fetal harm when administered to a pregnant woman [see *Use in Specific Populations* (8.1)].

Females

Advise females of reproductive potential to use effective contraception during treatment with LONSURF and for at least 6 months after the final dose.

Males

Because of the potential for genotoxicity, advise males with female partners of reproductive potential to use condoms during treatment with LONSURF and for at least 3 months after the final dose [see *Nonclinical Toxicology* (13.1)].

8.4 Pediatric Use

Safety and effectiveness of LONSURF in pediatric patients have not been established.

Juvenile Animal Toxicity Data

Dental toxicity including whitening, breakage, and malocclusion (degeneration and disarrangement in the ameloblasts, papillary layer cells and odontoblasts) were observed in rats treated with trifluridine/tipiracil at doses ≥ 50 mg/kg (approximately 0.33 times the exposure at the clinical dose of 35 mg/m² twice daily).

8.5 Geriatric Use

Of the 1114 patients with metastatic colorectal cancer or gastric cancer who received single agent LONSURF in clinical studies, 45% were 65 years of age or over, and 11% were 75 and over. In the 246 patients who received LONSURF in combination with bevacizumab; 41% were 65 years of age or over, and 10% were 75 and over. While these studies were not designed to detect a difference in efficacy, no overall differences were observed in patients 65 or older versus younger patients with either LONSURF as a single agent or LONSURF in combination with bevacizumab.

Patients 65 years of age or older who received LONSURF as a single agent had a higher incidence of the following hematologic laboratory abnormalities compared to patients younger than 65 years: Grade 3 or 4 neutropenia (46% vs 32%), Grade 3 anemia (20% vs 14%), and Grade 3 or 4 thrombocytopenia (6% vs 3%). Patients 65 years of age or older who received LONSURF in combination with bevacizumab had a higher incidence of the following hematologic laboratory abnormalities compared to patients younger than 65 years: Grade 3 or 4 neutropenia (60% vs 46%) and Grade 3 or 4 thrombocytopenia (5% vs 4%).

8.6 Renal Impairment

No dose adjustment is recommended for patients with mild or moderate renal impairment (CL_{cr} of 30 to 89 mL/min as determined by the Cockcroft-Gault formula). Reduce the dose of LONSURF for patients with severe renal impairment (CL_{cr} of 15 to 29 mL/min) [see *Dosage and Administration* (2.3)]. The pharmacokinetics of trifluridine and tipiracil have not been studied in patients with end stage renal disease.

8.7 Hepatic Impairment

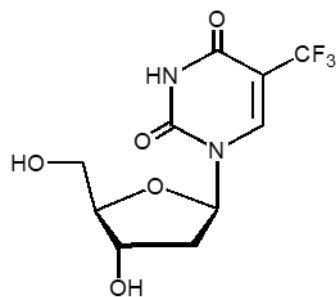
No adjustment to the starting dosage of LONSURF is recommended for patients with mild hepatic impairment. Do not initiate LONSURF in patients with baseline moderate or severe (total bilirubin >1.5 times ULN and any AST) hepatic impairment [see *Clinical Pharmacology* (12.3)].

11 DESCRIPTION

LONSURF contains trifluridine and tipiracil hydrochloride at a molar ratio of 1:0.5.

Trifluridine

Trifluridine, a nucleoside metabolic inhibitor, is described chemically as 2'-deoxy-5-(trifluoromethyl) uridine and has the following structural formula:

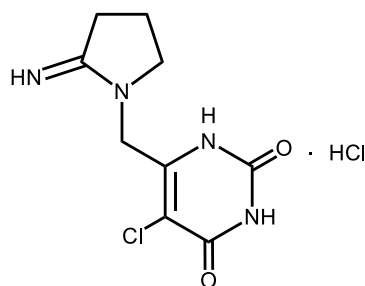


Trifluridine has a molecular formula C₁₀H₁₁F₃N₂O₅ and a molecular weight of 296.20.

Trifluridine is a white crystalline powder, soluble in water, ethanol, 0.01 mol/L hydrochloric acid, 0.01 mol/L sodium hydroxide solution; freely soluble in methanol, acetone; sparingly soluble in 2-propanol, acetonitrile; slightly soluble in diethyl ether; and very slightly soluble in isopropyl ether.

Tipiracil hydrochloride

Tipiracil hydrochloride, a thymidine phosphorylase inhibitor, is described chemically as 5-chloro-6-[(2-iminopyrrolidin-1-yl)methyl]pyrimidine-2,4-(1*H*,3*H*)-dione monohydrochloride or 2,4(1*H*,3*H*)-Pyrimidinedione, 5-chloro-6-[(2-imino-1-pyrrolidinyl)methyl]-, hydrochloride (1:1) and has the following structural formula:



Tipiracil hydrochloride has a molecular formula $C_9H_{11}ClN_4O_2 \cdot HCl$ and a molecular weight of 279.12. Tipiracil hydrochloride is a white crystalline powder, soluble in water, 0.01 mol/L hydrochloric acid, and 0.01 mol/L sodium hydroxide; slightly soluble in methanol; very slightly soluble in ethanol; and practically insoluble in acetonitrile, 2-propanol, acetone, diisopropyl ether, and diethyl ether.

LONSURF (trifluridine and tipiracil) tablets for oral use contain 15 mg of trifluridine and 6.14 mg of tipiracil equivalent to 7.065 mg of tipiracil hydrochloride or 20 mg of trifluridine and 8.19 mg of tipiracil equivalent to 9.420 mg of tipiracil hydrochloride.

LONSURF tablets contain the following inactive ingredients: lactose monohydrate, pregelatinized starch, stearic acid, hypromellose, polyethylene glycol, titanium dioxide, ferric oxide, and magnesium stearate. The tablets are imprinted with ink containing shellac, ferric oxide red, ferric oxide yellow, titanium dioxide, FD&C Blue No. 2 Aluminum Lake, carnauba wax, and talc.

12 CLINICAL PHARMACOLOGY

12.1 Mechanism of Action

LONSURF consists of a thymidine-based nucleoside analog, trifluridine, and the thymidine phosphorylase inhibitor, tipiracil, at a molar ratio 1:0.5 (weight ratio, 1:0.471). Inclusion of tipiracil increases trifluridine exposure by inhibiting its metabolism by thymidine phosphorylase.

Following uptake into cancer cells, trifluridine is incorporated into DNA, interferes with DNA synthesis and inhibits cell proliferation. Trifluridine/tipiracil demonstrated anti-tumor activity against *KRAS* wild-type and mutant human colorectal cancer xenografts in mice.

12.2 Pharmacodynamics

Cardiac Electrophysiology

LONSURF administered to 42 patients with advanced solid tumors at the recommended dosage had no large effect (i.e. >20 ms) in the mean QTc interval when compared to placebo and no exposure-QT relationship was identified. Two of 42 patients (4.8%) had QTc >500 msec and 2.4% had a QTc increase from baseline >60 msec.

12.3 Pharmacokinetics

After twice daily dosing of LONSURF, systemic exposure (AUC) of trifluridine increased more than dose-proportionally over the dose range of 15 mg/m² (0.43 times the recommended dose) to 35 mg/m².

The accumulation of trifluridine was 3-fold for AUC_{0-12hr} and 2-fold for C_{max} at steady state while no accumulation was observed for tipiracil.

Administration of a single dose of LONSURF 35 mg/m² increased the mean AUC_{0-last} of trifluridine by 37-fold and C_{max} by 22-fold with reduced variability compared to administration of a single dose of trifluridine 35 mg/m² alone.

Absorption

Following a single oral administration of LONSURF at 35 mg/m² in patients with cancer, the mean time to peak plasma concentration (T_{max}) of trifluridine was around 2 hours.

Food Effect

A standardized high-fat, high-calorie meal decreased trifluridine C_{max}, tipiracil C_{max} and AUC by approximately 40%, but did not change trifluridine AUC compared to those in a fasting state in patients with cancer following administration of a single dose of LONSURF 35 mg/m².

Distribution

Trifluridine mainly binds to human serum albumin. The in vitro protein binding of trifluridine in human plasma is >96%, independent of drug concentration and presence of tipiracil. Plasma protein binding of tipiracil is below 8%.

Elimination

After administration of LONSURF 35 mg/m², the mean elimination half-life (t_{1/2}) of trifluridine was 1.4 hours and of tipiracil was 2.1 hours after a single dose. The mean elimination half-life at steady state of trifluridine was 2.1 hours and of tipiracil was 2.4 hours.

Metabolism

Trifluridine and tipiracil are not metabolized by cytochrome P450 (CYP) enzymes. Trifluridine is mainly eliminated by metabolism via thymidine phosphorylase to form an inactive metabolite, 5-(trifluoromethyl) uracil (FTY). No other major metabolites were detected in plasma or urine.

Excretion

After single oral administration of LONSURF (60 mg) with [¹⁴C]-trifluridine, the total cumulative excretion of radioactivity was 60% of the administered dose. The majority of recovered radioactivity was eliminated into urine (55% of the dose) as FTY and trifluridine glucuronide isomers within 24 hours and the excretion into feces and expired air was <3% for both. The unchanged trifluridine was <3% of administered dose recovered in the urine and feces.

After single oral administration of LONSURF (60 mg) with [¹⁴C]-tipiracil hydrochloride, recovered radioactivity was 77% of the dose, which consisted of 27% urinary excretion and 50% fecal excretion. Tipiracil was the major component and 6-HMU was the major metabolite in urine, and feces.

Specific Populations

Based on the population pharmacokinetic analysis, there is no clinically relevant effect of age, sex, or race (White or Asian) on the pharmacokinetics of trifluridine or tipiracil.

Patients with Renal Impairment

In a dedicated renal impairment study, all patients received LONSURF 35 mg/m² twice daily except for patients with severe renal impairment who received 20 mg/m² twice daily. Mild renal impairment (CLcr of 60 to 89 mL/min as determined by the Cockcroft-Gault formula) had no clinically important effect on steady-state AUC_{0-last} of trifluridine and tipiracil. Moderate renal impairment (CLcr of 30 to 59 mL/min) increased steady-state AUC_{0-last} of trifluridine by 56% and tipiracil by 139% compared to normal renal function (CLcr ≥ 90 mL/min). Severe renal impairment (CLcr of 15 to 29 mL/min) increased the dose-normalized steady-state AUC_{0-last} of trifluridine by 140% and tipiracil by 614% compared to normal renal function. The pharmacokinetics of trifluridine and tipiracil have not been studied in patients with end stage renal disease.

Patients with Hepatic Impairment

No clinically important differences in the mean exposures of trifluridine and tipiracil were observed between patients with mild hepatic impairment (total bilirubin ≤ ULN and AST > ULN or total bilirubin <1 to 1.5 times ULN and any AST) to moderate hepatic impairment (total bilirubin >1.5 to 3 times ULN and any AST) and patients with normal hepatic function (total bilirubin and AST ≤ ULN); however, 5 of 6 patients with moderate hepatic impairment experienced Grade 3 or 4 increased bilirubin levels. The pharmacokinetics of trifluridine and tipiracil have not been studied in patients with severe hepatic impairment [see *Dosage Modifications* (2.2), *Use in Specific Populations* (8.6)].

Drug Interaction Studies

In vitro studies indicated that trifluridine, tipiracil, and FTY did not inhibit the CYP enzymes and had no inductive effect on CYP1A2, CYP2B6, or CYP3A4/5.

In vitro studies indicated that trifluridine was not an inhibitor of or substrate for human uptake and efflux transporters.

13 NONCLINICAL TOXICOLOGY

13.1 Carcinogenesis, Mutagenesis, Impairment of Fertility

No long-term studies evaluating the carcinogenic potential of trifluridine/tipiracil in animals have been performed. Trifluridine/tipiracil was genotoxic in a reverse mutation test in bacteria, a chromosomal aberration test in mammalian-cultured cells, and a micronucleus test in mice.

Animal studies did not indicate an effect of trifluridine/tipiracil on male fertility in rats. Dose-related increases in the corpus luteum count and implanted embryo count were observed, but female fertility was not affected.

14 CLINICAL STUDIES

14.1 Metastatic Colorectal Cancer

Previously treated metastatic colorectal cancer (single agent LONSURF)

RECOURSE

The efficacy of LONSURF was evaluated in RECOURSE (NCT01607957), an international, randomized, double-blind, placebo-controlled study conducted in patients with previously treated metastatic colorectal cancer (mCRC). Key eligibility criteria included prior treatment with at least 2 lines of standard chemotherapy for metastatic CRC, ECOG performance status (PS) 0-1, absence of brain metastasis, and absence of ascites requiring drainage in the past four weeks. Patients were randomized 2:1 to receive LONSURF 35 mg/m² or matching placebo orally twice daily after meals on Days 1-5 and 8-12 of each 28-day cycle until disease progression or unacceptable toxicity. Randomization was stratified by KRAS status (wild-type vs. mutant), time since diagnosis of first metastasis (<18 months vs. ≥ 18 months), and region (Japan vs. US, Europe and Australia). The major efficacy outcome measure was overall survival (OS) and an additional efficacy outcome measure was progression-free survival (PFS).

A total of 800 patients were randomized to LONSURF (N=534) with best supportive care (BSC) or matching placebo (N=266) plus BSC. The median age was 63 years, 61% were male, 58% and 35% were White and Asian respectively, and all patients had baseline ECOG PS of 0 or 1. The primary site of disease was colon (62%) or rectum (38%). KRAS status was wild-type (49%) or mutant (51%) at study entry. All patients received prior treatment with fluoropyrimidine-, oxaliplatin-, and irinotecan-based chemotherapy. All but one patient received bevacizumab and all but two patients with KRAS wild-type tumors received panitumumab or cetuximab.

Efficacy results are summarized in [Table 9](#) and [Figure 1](#).

Table 9: Efficacy Results from RECOURSE

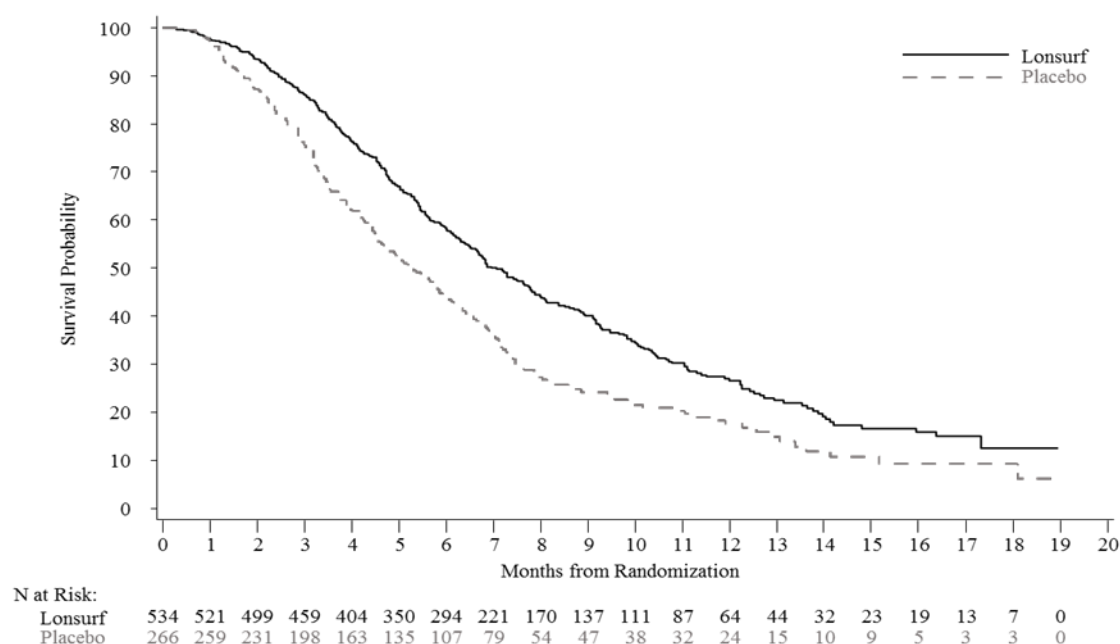
	LONSURF (N=534)	Placebo (N=266)
Overall Survival		
Number of deaths, N (%)	364 (68)	210 (79)
Median OS (months) ^a (95% CI) ^b	7.1 (6.5, 7.8)	5.3 (4.6, 6.0)
Hazard ratio (95% CI)	0.68 (0.58, 0.81)	
p-value ^c	<0.001	
Progression-Free Survival		
Number of events, N (%)	472 (88)	251 (94)
Hazard ratio (95% CI)	0.47 (0.40, 0.55)	
p-value ^c	<0.001	

^a Kaplan-Meier estimates

^b Methodology of Brookmeyer and Crowley

^c Stratified log-rank test (strata: KRAS status, time since diagnosis of first metastasis, region), 2-sided

Figure 1: Kaplan-Meier Curves of Overall Survival in RECURSE



Previously treated metastatic colorectal cancer (LONSURF in combination with bevacizumab)

SUNLIGHT

The efficacy of LONSURF in combination with bevacizumab was evaluated in SUNLIGHT (NCT 04737187), an international, randomized (1:1), open label study in patients with previously treated metastatic colorectal cancer. Patients were required to have received no more than 2 prior treatments for advanced disease, including a fluoropyrimidine, irinotecan, oxaliplatin, an anti-VEGF monoclonal antibody (optional) and an anti-EGFR monoclonal antibody for patients with RAS wild-type. Other key eligibility criteria included ECOG performance status (PS) 0-1, absence of symptomatic brain metastases, absence of ascites requiring drainage in the past 4 weeks, absence of uncontrolled hypertension, absence of non-healing wound, and absence of deep venous thromboembolic event in the past 4 weeks. Patients were randomized to receive LONSURF 35 mg/m² administered orally twice daily on Days 1 to 5 and 8 to 12 of each 28-day cycle with or without bevacizumab 5 mg/kg administered intravenously every 2 weeks (on Day 1 and Day 15) of each 4-week cycle until disease progression or unacceptable toxicity. Randomization was stratified by geographic region (North America, European Union, Rest of the World), time since diagnosis of metastatic disease (<18 months, ≥18 months) and RAS status (wild-type, mutant). The major efficacy outcome was overall survival (OS), and an additional efficacy outcome measure was progression-free survival (PFS).

A total of 492 patients were randomized to receive LONSURF in combination with bevacizumab (N=246) or LONSURF as a single agent (N=246). The trial population characteristics were as follows: median age 63 years, 52% male, 88% White, 1.4% Black, 0.2% Asian, 0.2% American Indian or Alaska Native, and 9.6% were unknown, 46% had ECOG PS 0 and 54% had ECOG PS 1. The primary site of disease was colon (73%) or rectum (27%). Seventy-one percent of patients had a RAS mutant status. A total of 92% of patients received 2 prior anticancer treatment

regimens for advanced CRC; all patients received prior fluoropyrimidine; 99.8% of patients received prior irinotecan; 98% of patients received prior oxaliplatin. Among all 492 treated patients, 76% received prior anti-VEGF treatment, and 72% received an anti-VEGF monoclonal antibody. Among the 142 patients with RAS wild-type mCRC, 94% received prior anti-EGFR monoclonal antibody.

Efficacy results are summarized in [Table 10](#) and [Figure 2](#).

Table 10: Efficacy Results from SUNLIGHT

	LONSURF plus Bevacizumab (N=246)	LONSURF (N=246)
Overall survival		
Number of deaths, N (%)	148 (60)	183 (74)
Median OS (months) ^a (95% CI) ^b	10.8 (9.4, 11.8)	7.5 (6.3, 8.6)
Hazard ratio (95% CI) ^c	0.61 (0.49, 0.77)	
p-value ^d	<0.001	
Progression-free survival (per investigator)		
Number of events N (%)	206 (84)	236 (96)
Median PFS (months) ^a (95% CI) ^b	5.6 (4.5, 5.9)	2.4 (2.1, 3.2)
Hazard ratio (95% CI) ^d	0.44 (0.36, 0.54)	
p-value ^d	<0.001	

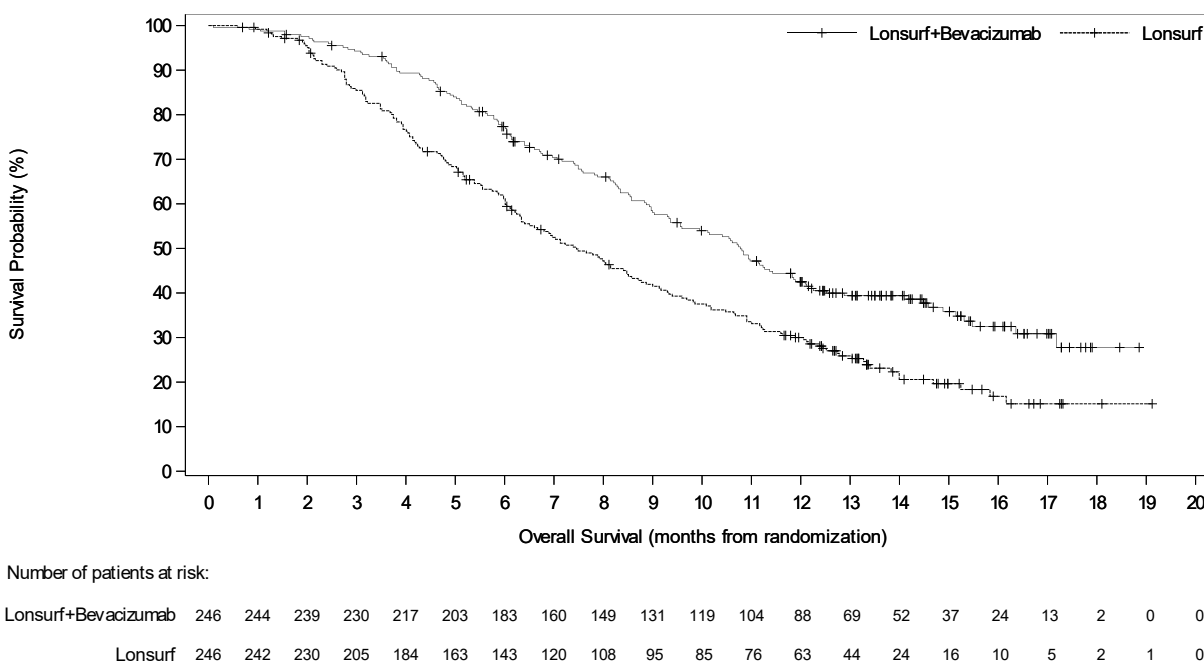
^a Kaplan-Meier estimates

^b Methodology of Brookmeyer and Crowley

^c Stratified proportional hazards model (strata: region, time since first metastasis diagnosis, RAS status)

^d Stratified log-rank test (strata: region, time since first metastasis diagnosis, RAS status), 1-sided p-value

Figure 2: Kaplan-Meier Curves of Overall Survival in SUNLIGHT



14.2 Metastatic Gastric Cancer

The efficacy of LONSURF was evaluated in TAGS (NCT02500043), an international, randomized, double-blind, placebo-controlled study in patients with metastatic gastric or gastroesophageal junction (GEJ) adenocarcinoma previously treated with at least 2 prior regimens for advanced disease. Previous treatments must have included a fluoropyrimidine, a platinum, and either a taxane or irinotecan. Patients with HER2/neu-positive tumors must have received prior HER2/neu-targeted therapy, if available. Adjuvant chemotherapy could be counted as one prior regimen in patients who had recurrence during or within 6 months of completion of the adjuvant chemotherapy. Other key eligibility criteria included ECOG performance status (PS) 0 or 1. Patients were randomized 2:1 to receive LONSURF 35 mg/m² orally twice daily on Days 1-5 and 8-12 of each 28-day cycle with best supportive care (BSC) or matching placebo with BSC until disease progression or unacceptable toxicity. Randomization was stratified by ECOG PS at baseline (0 vs. 1), prior ramucirumab (yes vs. no), and geographic region (Japan vs. rest of world). The major efficacy outcome measure was OS and an additional outcome measure was PFS.

A total of 507 patients were randomized to LONSURF (N=337) or placebo (N=170). The median age was 63 years, 73% were male, 70% and 16% were White and Asian respectively, and 38% had a baseline ECOG PS of 0. Seventy-one percent of patients had gastric tumors, 29% had GEJ tumors, and two patients had gastric/GEJ tumors. All patients received platinum-based chemotherapy, 99% received fluoropyrimidine-based therapy, 91% received a taxane, 55% received irinotecan, and 33% received ramucirumab. The HER2 status was negative in 62%,

positive in 19%, and unknown in 20% of patients. Among the 94 patients with HER2 positive tumors, 89% received prior anti-HER2 therapy.

Efficacy results are summarized in [Table 11](#) and [Figure 3](#).

Table 11: Efficacy Results from TAGS

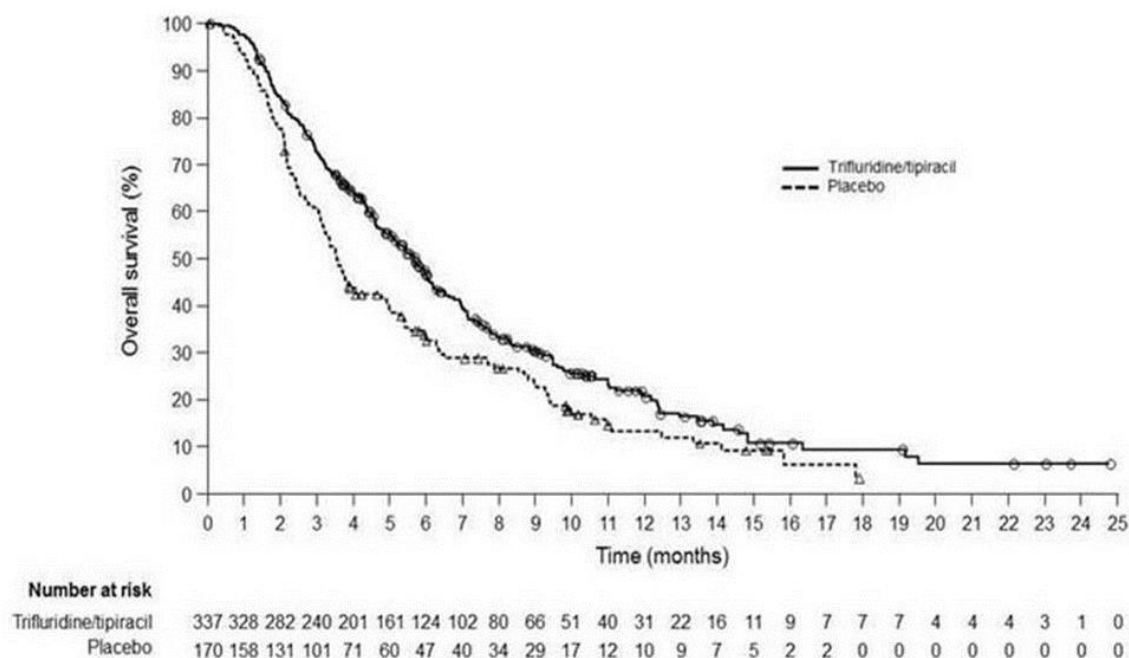
	LONSURF (N=337)	Placebo (N=170)
Overall Survival		
Number of deaths, N (%)	244 (72)	140 (82)
Median OS (months) ^a (95% CI) ^b	5.7 (4.8, 6.2)	3.6 (3.1, 4.1)
Hazard ratio (95% CI)	0.69 (0.56, 0.85)	
p-value ^c	0.0006	
Progression-Free Survival		
Number of events, N (%)	287 (85)	156 (92)
Hazard ratio (95% CI)	0.56 (0.46, 0.68)	
p-value ^c	<0.0001	

^a Kaplan-Meier estimates

^b Methodology of Brookmeyer and Crowley

^c Stratified log-rank test (strata: ECOG PS, prior ramucirumab treatment, region), 2-sided

Figure 3: Kaplan-Meier Curves of Overall Survival in TAGS



15 REFERENCES

1. “OSHA Hazardous Drugs”. OSHA.
<http://www.osha.gov/SLTC/hazardousdrugs/index.html>

16 HOW SUPPLIED/STORAGE AND HANDLING

LONSURF 15 mg/6.14 mg tablets are supplied as white, biconvex, round, film-coated tablet, imprinted with ‘15’ on one side, and ‘102’ and ‘15 mg’ on the other side, in gray ink. The tablets are packaged in HDPE bottles with child resistant closures in the following presentations:

- 20 count: NDC 64842-1025-1
- 40 count: NDC 64842-1025-2
- 60 count: NDC 64842-1025-3

LONSURF 20 mg/8.19 mg tablets are supplied as pale red, biconvex, round, film-coated tablet, imprinted with ‘20’ on one side, and ‘102’ and ‘20 mg’ on the other side, in gray ink. The tablets are packaged in HDPE bottles with child resistant closures in the following presentations:

- 20 count: NDC 64842-1020-1
- 40 count: NDC 64842-1020-2
- 60 count: NDC 64842-1020-3

Store at 20°C to 25°C (68°F to 77°F); excursions are permitted from 15°C to 30°C (59°F to 86°F) [See USP Controlled Room Temperature].

LONSURF is a cytotoxic drug. Follow applicable special handling and disposal procedures.¹

If stored outside of original bottle, discard after 30 days.

17 PATIENT COUNSELING INFORMATION

Advise the patient to read the FDA-approved patient labeling ([Patient Information](#)).

Severe Myelosuppression

Advise patients to immediately contact their healthcare provider if they experience signs or symptoms of infection and advise patients to keep all appointments for blood tests [*see Warnings and Precautions (5.1)*].

Gastrointestinal Toxicity

Advise patients to contact their healthcare provider for severe or persistent nausea, vomiting, diarrhea, or abdominal pain [*see Adverse Reactions (6.1)*].

Administration Instructions

Advise patients that LONSURF is available in two strengths and they may receive both strength tablets to provide the prescribed dosage.

Advise patients to take LONSURF with food [*see Dosage and Administration (2.1)*].

Advise patients not to retake doses of LONSURF that are vomited or missed and to continue with the next scheduled dose.

Advise patients that anyone else who handles their medication should wear gloves [*see References (15)*].

Embryo-Fetal Toxicity

Advise pregnant women and females of reproductive potential of the potential risk to the fetus. Advise females to inform their healthcare provider of a known or suspected pregnancy [*see Warnings and Precautions (5.2), Use in Specific Populations (8.3)*].

Advise female patients of reproductive potential to use effective contraception during treatment with LONSURF and for at least 6 months after the final dose [*see Warnings and Precautions (5.2), Use in Specific Populations (8.3)*].

Advise males with female partners of reproductive potential to use condoms during treatment with LONSURF and for at least 3 months after the final dose [*see Use in Specific Populations (8.3), Nonclinical Toxicology (13.1)*].

Lactation

Advise women not to breastfeed during treatment with LONSURF and for 1 day following the final dose [*see Use in Specific Populations (8.2)*].

Manufactured by: Taiho Pharmaceutical Co., Ltd., Japan

Manufactured for: Taiho Oncology, Inc., Princeton, NJ 08540 USA

LONSURF is a registered trademark of Taiho Pharmaceutical Co., Ltd. used under license by Taiho Oncology, Inc.